



GMT MONTHLY MEMBERSHIP PROGRESS REPORT

Results as of: 12/31/2019

Multiple District 11

LOCATION: MICHIGAN

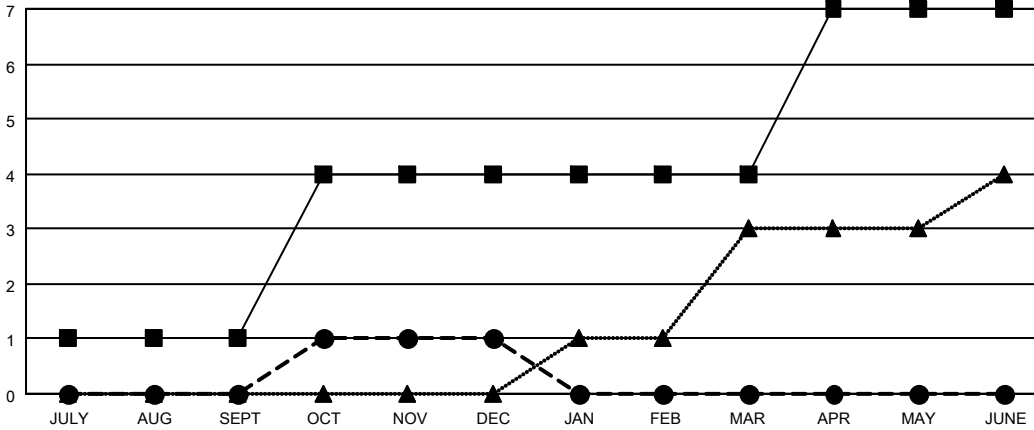
GMT: OPEN

GMT CA 1

| Clubs | | | |
|-----------------------|---------------|-----------|---------------|
| RESULTS FOR 2019-2020 | | | |
| QUARTER | NEW CLUB GOAL | NEW CLUBS | DROPPED CLUBS |
| JULY/AUG/SEPT | 1 | 0 | 2 |
| OCT/NOV/DEC | 3 | 1 | 9 |
| JAN/FEB/MAR | 0 | 0 | 0 |
| APR/MAY/JUNE | 3 | 0 | 0 |

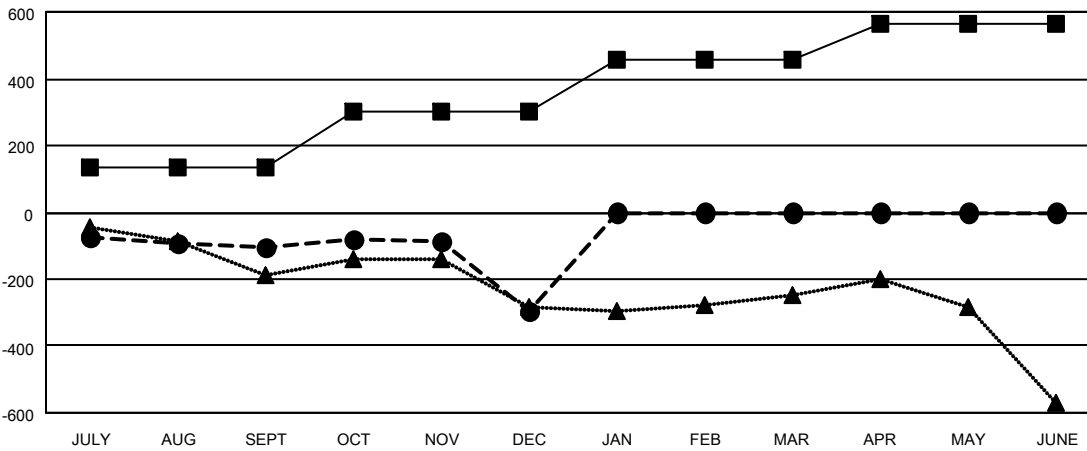
| Members | | | |
|-----------------------|------------------------|----------------------|--|
| RESULTS FOR 2019-2020 | | | |
| QUARTER | MEMBER GROWTH NET GOAL | MEMBER GROWTH ACTUAL | DROPPED MEMBERS ACTUAL (including transfers) |
| JULY/AUG/SEPT | 135 | 244 | 306 |
| OCT/NOV/DEC | 165 | 265 | 433 |
| JAN/FEB/MAR | 155 | 0 | 0 |
| APR/MAY/JUNE | 110 | 0 | 0 |

GOALS AND ACTUAL NEW CLUBS CUMULATIVE



- - CURRENT YEAR GOALS FOR NEW CLUBS
- - CURRENT YEAR ACTUAL NEW CLUBS
- ▲ - LAST YEAR ACTUAL NEW CLUBS

GOALS AND ACTUAL MEMBERS CUMULATIVE



- - MEMBER GROWTH NET GOAL
- - MEMBER GROWTH ACTUAL
- ▲ - LAST YEAR MEMBERSHIP ACTUAL

| | | |
|------------------------|---|---------------------------------------|
| DROPPED CLUBS: 11 | 188 CLUBS OF 470 ADDED 1 OR MORE NEW MEMBERS | <u>GENDER DISTRIBUTION</u> |
| | | MALE 8,443 (68.97%) |
| | | FEMALE 3,799 (31.03%) |
| <u>DROPPED MEMBERS</u> | CLICK HERE FOR CUMULATIVE MEMBERSHIP DATA | TOTAL FAMILY UNIT MEMBERS 2,393 |
| DECEASED 106 | | FAMILY MEMBERS PAYING HALF DUES 1,216 |
| CLUB CANCELLED 97 | | |
| OTHER 532 | | |
| TOTAL 735 | | |